



Unit 10 Colne Valley Business Park, Huddersfield, HD7 5QG

£1,500 Per Month + VAT

6391.00 sq ft



Details

Amco Commercial are pleased to offer this Ground Floor Industrial/Storage Unit.

The unit is located in the thriving Colne Valley Business Park, which is located on the corner of Manchester Road and Hoyle House Fold in Linthwaite. Nearby tenants include the Premier Shop, Post Office, The Fun Factory and The Black Belt Karate Club.

The unit comprises a large storage area with access via a large door sufficient for vehicles. The unit has good access to the main road and benefits from the area immediately in front of the door being covered, giving tenants dry loading. The total floor area is 6,391 sqft.

The Unit is ideal for car-related trade, storage, warehousing, or a workshop. The unit has a single-phase power supply and a newly installed distribution board and LED lighting.

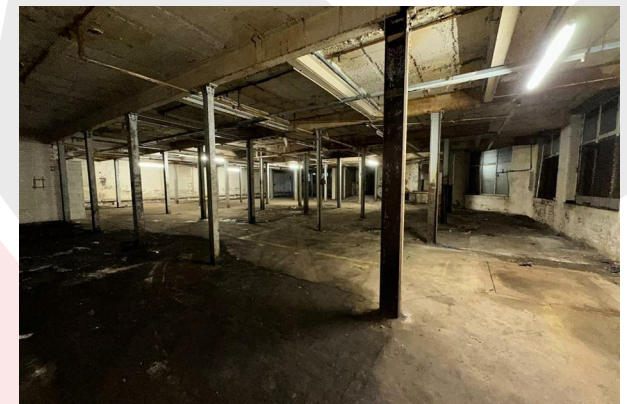
Tenants benefit from the use of the mill's large customer car park and multiple communal toilets. Incentives available.

If you are interested in viewing this property, or to request additional information, please do not hesitate to contact one of our agents.

These particulars are only a guide. They are not exact or guaranteed. Property offered subject to contract.

Viewing

Please contact us on 0161 773 3978 if you wish to arrange a viewing appointment for this property or require further information.



Area Map



These particulars, whilst believed to be accurate are set out as a general outline only for guidance and do not constitute any part of an offer or contract. Intending purchasers should not rely on them as statements of representation of fact, but must satisfy themselves by inspection or otherwise as to their accuracy. No person in this firm's employment has the authority to make or give any representation or warranty in respect of the property.

3 Middleton Road, Manchester, M8 5DT

T: 0161 773 3978 | info@amcocommercial.co.uk

